

A New Generation of Motorcycle Cable Kits

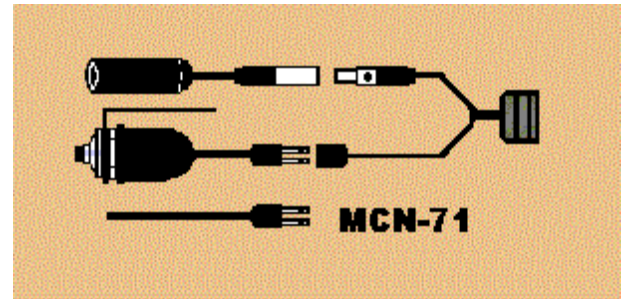
Last year Setcom introduced the new KE/KA helmet kits. These kits featured a waterproof electret microphone mounted on a flexible boom. This year we have turned our attention to updating our line of motorcycle cable kits. A resurgence in the popularity of black-and-white Harley-Davidsons, and the installation difficulties they present, contributed to our starting with a clean sheet of paper. In the process we decided to address a number of other product features customers have been asking for.

The design effort resulted in a family of new cable kits that address not only Harley installations but also offer new solutions for PTT switch mounting, scanning radio operation, and integrating Public Address System and radio PTT into a single switch assembly.

For installations requiring a single function radio PTT switch, we have introduced a number of new cable kits. For use with portable radios they are the "-31" Series, for mobiles the "-71" Series. The -71 Series cable kits are discussed below, but the PTT brackets are common to both. The MCH-71 for Harley installations, MCK-71 for Kawasaki, and the MCU-71 "universal" for use with applications that cannot use either a Harley or Kawasaki mounting bracket. Complimenting the new bracket designs a breakaway has been added to the cable harness. The smaller diameter of this breakaway connector provides multiple benefits. It allows the harness to be easily routed through tight areas during installation. For maintenance purposes, it allows components to be replaced modularly.



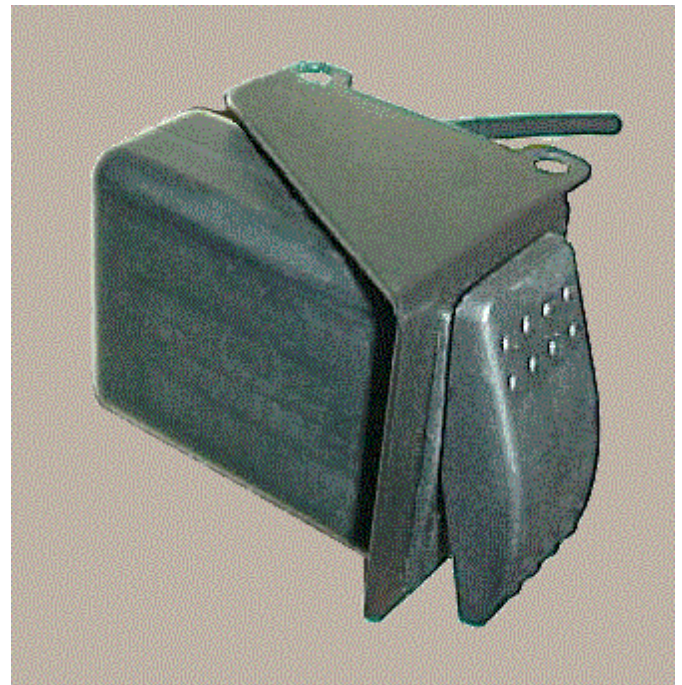
MC-71 Series Handlebar Bracketry



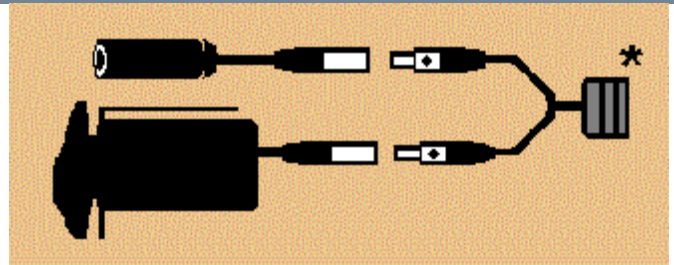
MC-71 Assembly

New Switch Assembly

The MC-72 series motorcycle cable kit features new bracketry and the maintenance breakaways as described above. Additionally, a new rocker-style, three-position switch is used. This switch can be configured to provide scan, monitor and PTT functions for departments using scanning radios. Shown below are the Kawasaki and Harley specific switch brackets. These designs allow the PTT switch to be installed without modification of the handlebar grip or relocation of any handlebar controls.



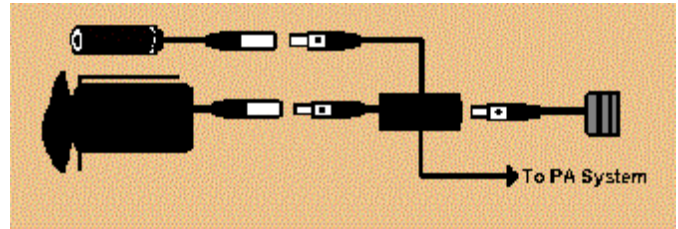
Rocker Style MC-72 Three Position Switch
(Kawasaki Bracket Shown)



MC-72 Cable Assembly

MC-73 For Public Address

For departments using motor mounted Public Address systems, the MCK-73 and MCH-73 Cable Kits utilize the three-position switch to integrate Public Address and Radio functions. In the " Lock" position the motorcycle cable kit connects the Helmet Kit Microphone to the Public Address System. This allows the officer to use his PA without removing a hand from the handlebar.



MC-73 Motorcycle Cable Kit